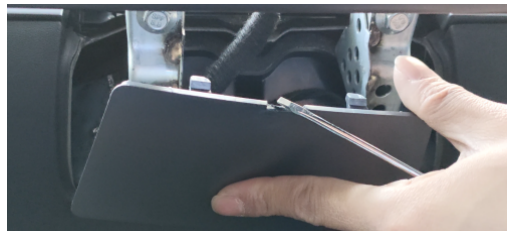


Model3, Y Screen Swiveling Mount kit installation manual

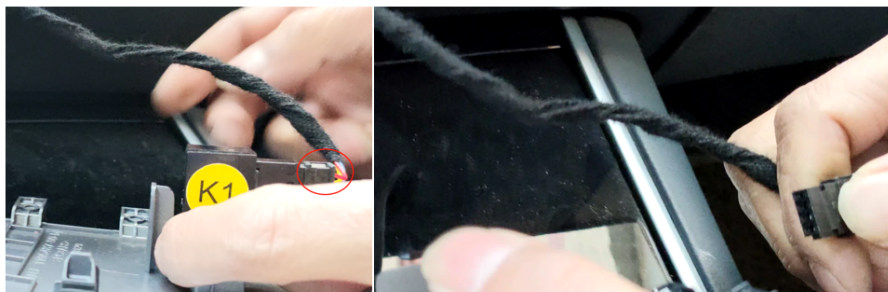


Note: Before starting the installation, please turn off the power of the original car screen

- 1** Use screws to pry the trim panel under the screen from the gap



- 2** Unplug the plug connecting the screen and the trim



- 3** Gently lift the buckles on both sides of the inner panel (It should be gentle), take out the temperature sensor



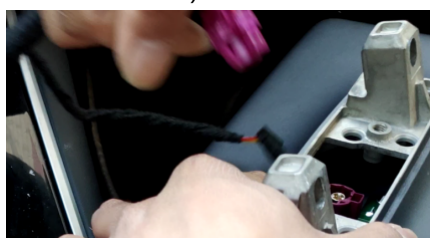
- 4** Use a 10mm Screw socket, unscrew the screws on both sides under screen, and then gently shake it and move it out to remove the screen



- 5** Take out the white buckle



- 6** Lightly press the small buckles on both sides of the screen plug and unplug it (before operating this step, make sure the screen power is turned off)



- 7** Prepare the screen swiveling mount kit and installation accessories



- 8** Place downwards the kit to unscrew of the screws on both sides.



- 9** Parallel to insert the mount kit to the position of original car screen on the dashboard



Model3, Y Screen Swiveling Mount kit installation manual

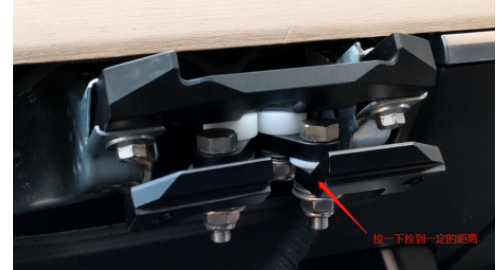


Note: Before starting the installation, please turn off the power of the original car screen

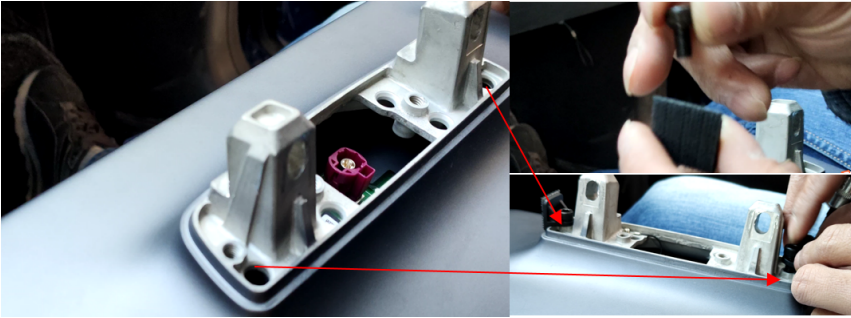
- 10** Use the original car screws to fix the mount kit on the dashboard and use 10mm Screw socket to tighten it further (Move the upper layer mount kit forward outside a little for easier installation)



- 11** Pull the upper kit around left and right side to adjust to the proper distance



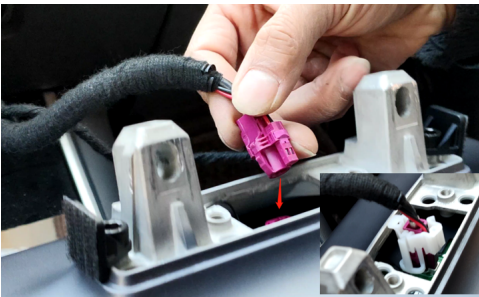
- 12** Insert the leather cover fixed stuff into the screw holes showed by the arrow of both side



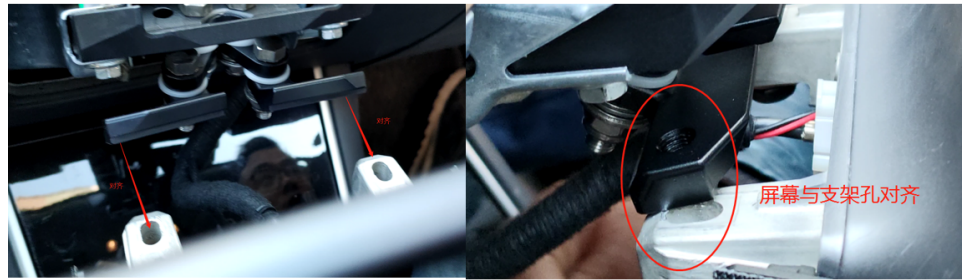
- 13** Use a 5mm Hexagon screwdriver to tighten the screws of the leather cover fixed stuff



- 14** Insert back to restore for the screen cable and the white buckle



- 15** After recover, screen should be align with the bracket part shown in the arrow, find out the screw holes



- 16** Use our screws with putting the mat, tighten the screws, and then use a 13mm Screw socket to further fix the screen and the bracket



- 17** Adjust the tightness of the 4 screws of the bracket, and then use our leather case to cover the mount kit. Installation is done.

